

October 2008

Volume 4, Issue 2

# Laguna Beach Garden Club, Inc.



# W eeder's Digest

## *Zip At Dee Doo Dah! Zip At Dee Aty!*

### Disneyland's Chief Horticulturist Is Coming Your Way!

Monthly Meeting  
 2nd Friday of month  
 Neighborhood  
 Congregational Church  
 340 St. Ann's Dr.,  
 Laguna Beach  
 Social 9:30 a.m.  
 Meeting: 10 a.m.—Noon.

  
 Plant Table Revenue  
 for September was  
**\$139.00**  
 Good Work!

Welcome  
 New Members  
  
 Susan E. Layman  
 Sharon McErlane  
 Dorothy Redwood  
 Shirley Wall  
  


All together now, M ... I ... C ... K ... E ... Y Well, you know the rest. Suffice it to say, THE MOUSE is in the building! As our speaker this month we have Disneyland's Director of Horticulture, Karen Hedges!

Who is Karen Hedges, you ask? She is the person behind the landscaping that we so admire when we visit Disneyland and its environs. We may go to Disneyland to ride the rides, but, as gardeners forever, we also notice how the landscaping so perfectly fits the surroundings. We appreciate and take notes on how they have landscaped and accommodated high traffic areas, not so pretty areas, and areas that are always in public view. We may mentally note that our yards have the same set-up: high traffic areas, not so pretty areas, and those areas that are always in public view.

Karen Hedges, Disneyland Resort Director of Horticulture, will share

with us her history of working for "the Mouse."

As you can surmise, Karen has spent many years toiling in the garden, beginning with pruning roses for her grandmother and keeping landscaping accounts while attending and graduating from Cal Poly University at San Luis Obispo, with a degree in horticulture.

Karen recounts, "My first job was working in San Diego County for a wholesale grower of cacti and succulents, then for a plant and seed exporter, overseeing the propagation unit. Later, I migrated back to Orange County, working for a landscape contracting firm." Working for Tierra Verde Landscape, Ms. Hedges literally started her education from the ground up, driving a dump truck and leading crews that installed residential landscapes. She was soon made supervisor and was responsible for Orange and Riverside Counties' commercial properties.

Beginning in 1981, Karen was contracted by Disneyland Hotel to redesign areas of their landscape, updating gardens from the 1950's. The position evolved into managing the entire Disneyland landscape team. Today, her job is managing the gardens for two theme parks, three hotels, and the shopping and dining districts—comprising several hundred acres of the Disneyland Resort in Anaheim. Wow!

Walt Disney once remarked, "Disneyland will never be completed. It will continue to grow as long as there is imagination left in the world." With Karen Hedges at the helm of Disneyland's horticulture, we can be assured of that! (Come at 9:30 AM for Greet and Eat, followed by a short business meeting, and then our program.)



\*\*\*\*\*

Gayle Whitaker  
President

Nancy Lawrence  
1st VP, Programs

Arline Moran  
2nd VP,  
Publicity/Web site

Dee Koski  
3rd VP, Ways & Means

Nancy Englund  
3rd VP, Garden Tour

Polly Dix  
4th VP, Membership

Cheryl Merritt  
Recording Secretary

Jeanne Yale  
Corresponding Secretary

Pam Luttrell  
Newsletter

Vernetta Crandall  
Treasurer

Dixie Henry  
Financial Secretary

Joyce Conway  
Past President

\*\*\*\*\*



### Bits and Pieces

That's what you will use to make that one of a kind flower pot, stepping stone, birdbath, trivet or that ball at the end of the garden path, or anywhere else your imagination leads you. We will play with those pieces for a couple hours and when we are done you will be amazed at the artistry you've created! So gather up your bits and pieces of tiles, marbles, broken china or whatever and join us for a fun time and take home your *objet d'art*.

Where: Pam Luttrell's house—25791 Delta Ave., Mission Viejo

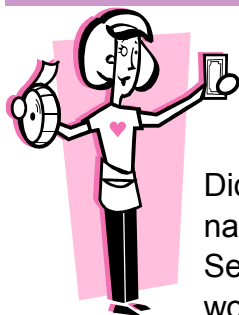
When: Friday, Oct. 17th, at 9:30 a.m.



#### What to bring:

- Broken glass, tiles, china, whatever.
- A pot or whatever you would like to mosaic—keep it small, so that you can finish in a day.
- A work apron—we get really dirty doing this.
- Tile nippers—optional—but really help cut the pieces of tile, etc. They can be found at hardware stores (Home Depot, etc.) in the tile department, for under \$20.
- Chair, unless you think and work better on your feet.

Fee: \$5



### Raffle Huge Success!

Did you win one of Michael Merritt's gorgeous and imaginative centerpieces? Well, winner or not we all left the September meeting with some wonderful and creative ideas about what it takes to craft a unique showpiece of our own! Thank you Michael, and your lovely assistant Cheryl, for a very entertaining program. We raised \$335.00, which will be used to help defray program expenses.



Weeder's Digest is published monthly from September through May for the members of the Laguna Beach Garden Club.

Pam Luttrell, Editor

Additional information about club activities is available at our web site



www.lagunabeachgardenclub.org

## Get Acquainted Member Tour October 26th



Madeleine Visca our Tours and Travel chairperson announces the first "get acquainted" member tour of the season. At this tour we will be treated to a look at some of our member's interesting gardens.

**When:** Friday October 24th at 9:30 a.m.

**Where:** Meet at the Church and car pool.

**More detail will be given at the October Meeting.**

### Of Interest to Gardeners:

#### Roger's Gardens

10/11/2008 @ 9:00 a.m.

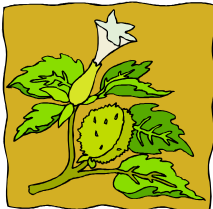


#### **The Basics of Gardening and Fall planting with Cristin Fusano**

Learn all about "Backbone" Plants and how they can provide structure and form in a garden space, setting the stage for everything else. Cristin will show you how to create a garden by following a few simple steps and sharing her tips for Fall Planting with seeds, showy perennials, fillers, accents and bulbs

#### Fullerton Arboretum

10/11/08 from 10:00 am to 4:00 pm

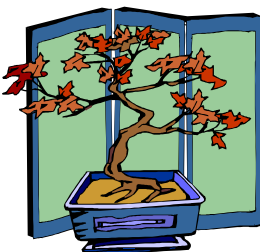


#### **California Native and Fall Plant Sale**

The California Native and Fall Plant Sale returns to the Fullerton Arboretum on October 11 & 12, 2008. Hundreds of native and fall plants will be on sale. Sales hours both days are 10:00 am to 4:00 pm and admission is free

10/18/ & 10/19/2008 from 10:00 am to 4:00 pm

#### **Bonsai Show**



The annual Kofu Kai Club Bonsai Show returns to the Fullerton Arboretum this fall on October 18 & 19, 2008. Expect for this show to be bigger and better than ever, with many unusual and beautiful specimen bonsai trees on display. This show is open to the public and admission is free. Show hours both days are 10:00 am to 4:00 pm.

You Signed up



to bring food for the refreshment table on October 10th

Synthia Scofield

Kristina Dendinger

Vernetta Crandall

Dorothy Goldberg

Riki Belew

Helga Yaillen

Mary Frances Anderson

Beate Loomis

Rosalind Lippeatt

Barbara Lamm

Centerpiece for Table  
Jeanne Yale

Please arrive by 9:15 am with your goodies.

Thank you



**Reminder!**

Pick up your Membership/Year book at the membership table!



## Tips for Plant Table Donors

1. Label plants –If possible, write the name, ultimate size, light requirements, water requirements, and blooming information on an index card. Include a picture of the plant in bloom, if you have one.
2. If you donated a plant, check the table 10 minutes after the meeting is over. If your plant has not sold, please take it home. Gloria can nurse only so many.
3. Any size bouquet of fresh flowers from your garden will sell in a minute.
4. Please bring clean items only.
5. Unique, vintage and upscale items sell best.



**Thanks to all who donate and shop!**

### F.Y.I.



**The Annual Spring Garden Tour date has been changed. Please amend the date to—Friday, May 1st—in your membership book.**

## Club and District Dates to Remember in October

- ◆ **Monday, October 6, 10:00 a.m.**—District meeting at Canyon Crest Clubhouse, Program: “Wow, I didn’t know it was this easy!” Tips and instructions on preparing for a flower show.
- ◆ **Friday, October 10, 9:30 a.m.**—LBGC monthly meeting, at Neighborhood Congregational Church, St. Ann’s Drive & Gleneyre, Laguna Beach. Karen Hedges from Disneyland see page 1 for details.
- ◆ **Friday, October 17, 9:30 a.m.**—Green Thumb Event, Hostess - Pam Luttrell– 25791 Delta Ave., Mission Viejo, 768-9406 Sign up sheet at October meeting, see page 2 for details.
- ◆ **Friday, October 24, 9:30 a.m.**—Member Get Acquainted Tour. Details will be discussed at the October meeting. Or call Madeleine Visca 494-7307
- ◆ **Monday, October 27, 9:30 a.m.**—LBGC Board meeting, Hostess Vernetta Crandall, 2209 Via Gavilan, San Clemente, 366-6049. Committee Chairs welcome. **NOTE: This is a change of Hostess.**

